

97.5MW STEAM TURBINE SET

1. General specification

| | |
|---------------|--|
| -Maker | MES-ALSTOM (Mitsui Engineering & Shipbuilding Co., Ltd.) Japan |
| -Mfg. data | 2014 |
| -Running time | Wait for test after installing the new production |

2. Steam turbine specification

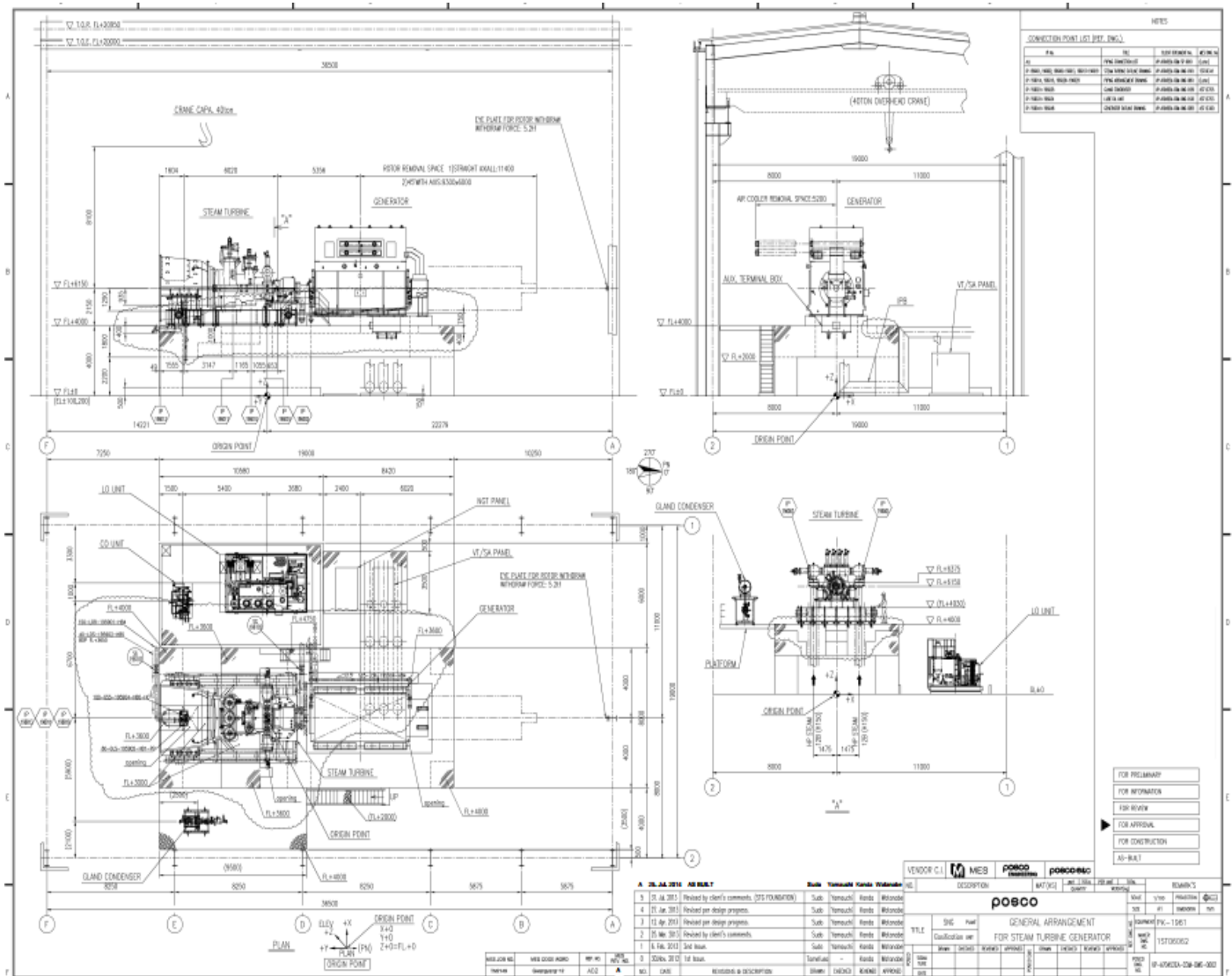
| | |
|--------------------------------|---|
| -Maker | MES (Mitsui Engineering & Shipbuilding Co., Ltd.) Japan |
| -Turbine type | CD30.46 |
| -Steam inlet pressure | 70barG |
| -Steam inlet temperature | 490°C |
| -No.1 Extraction steam P & T | 31.5barG & 388.5°C |
| -No.2 Extraction steam P & T | 5.5barG & 223.3°C |
| -Nor. Exhaust pressure | 0.11barA |
| -Turbine speed | 3,600 rpm |
| -Rated output | 97,500 kw |
| -Weight | 132 ton |
| -Number of stages | 16 |
| -Number of 1 stage nozzle arcs | 4 |
| -Steam inlet flange | ASME1500#RJ12" x 2 |
| -No.1 extraction steam flange | ASME 600#RF 16" |
| -No.2 extraction steam flange | ASME 150#RF 32" |
| -Steam exhaust flange | ø3,600(inner dia.) |

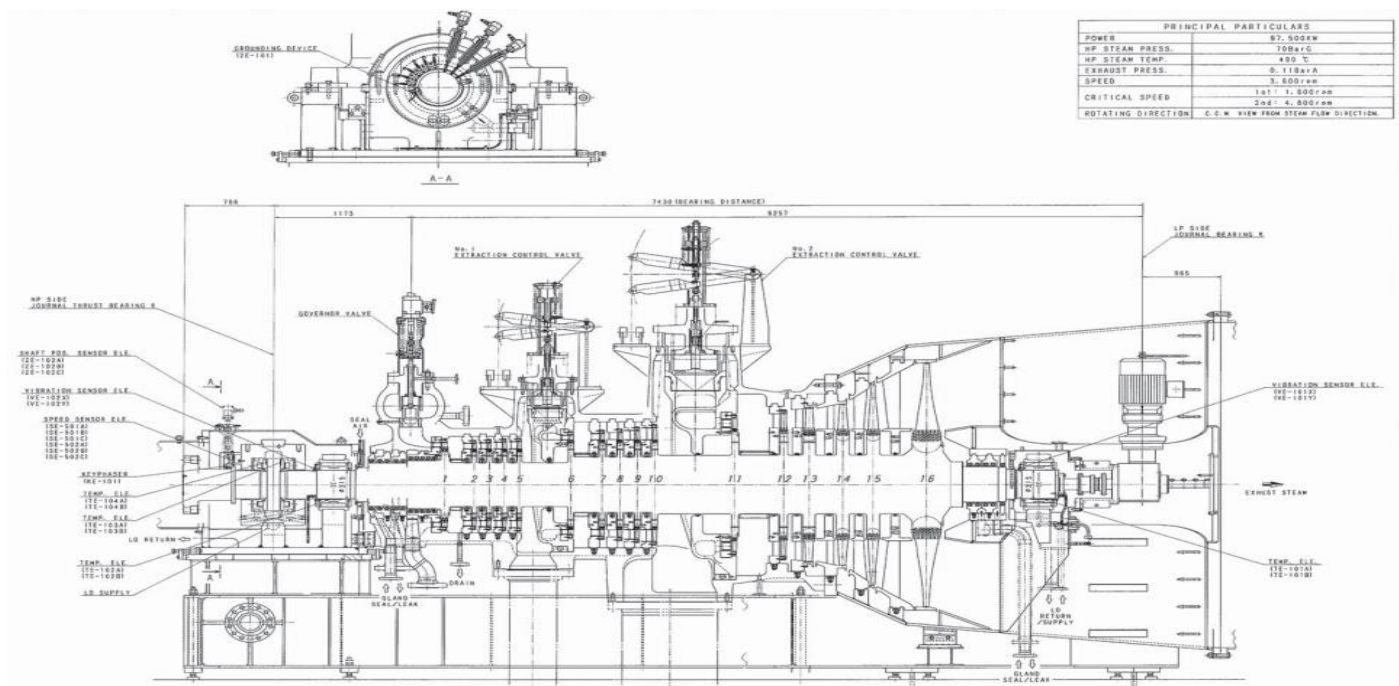
3. Synchronous generator

| | |
|-----------------|--|
| -Standard | IE60034-1(2010), IEC60034-3(2007) |
| -Location | Indoor |
| -Cooling system | Totally enclosed type with top-mount air coolers |
| -Generator type | SHBLR-CHC Horizontal type cylindrical rotor synchronous generator |
| -No. of phases | 3 |
| -No. of pole | 2 |
| -Output | 114,706KVA |
| -Voltage | 13,800V |
| -Current | 4799A |
| -Frequency | 60Hz |

| | |
|----------------------|--|
| -Speed | 3600min ⁻¹ |
| -Power factor | 0.85 |
| -Excitation voltage | DC300V |
| -Excitation capacity | 340KW |
| -Stator connection | Star |
| -Exciter type | SSBR (overhang brushless exciter with PMG) |
| -Exciter phases | 3 |
| -Exciter pole | 8 |
| -Exciter output | 378KVA / 240V / 909A /240Hz / 3600min ⁻¹ / 0.9 / 110V |
| -PMG type | SPR |
| -PMG phases | 3 |
| -PMG pole | 12 |
| -PMG output | 6KVA / 120V / 28.9A / 3600 min ⁻¹ /0.95 |
| -Rotating rectifier | 340KW / DC300V |
| -Circuit | 2S-3P-6A |

GA DWG. Steam turbine generator





4. View

